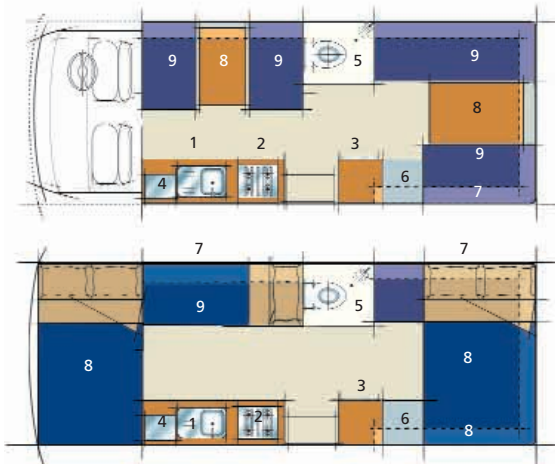


FRONTIER

BOOKING CODE: 6BB
Isuzu or similar
CAPACITY: 6 adults



DAY LAYOUT

1. Sink
2. Gas stove
3. Fridge
4. Microwave
5. Shower, toilet
6. Wardrobe
7. Storage
8. Table
9. Bench seat

NIGHT LAYOUT

1. Sink
2. Gas stove
3. Fridge
4. Microwave
5. Shower, toilet
6. Wardrobe
7. Storage
8. Double bed
9. Two single bunk beds

Living

- Bed Dimensions:** Two double beds 2.25 x 1.50m, and 1.90 x 1.10m. Two single beds 1.90 x 0.69m.
- Linen:** Vehicle is supplied with all linen including pillows, sheets, sleeping bags and towels.
- Power Supply:** 24v battery / 240v mains power. The vehicle is supplied with a 10 - 15m mains power cable for use at the campgrounds. The vehicle also has one 24v battery for the domestic system and a separate 24v battery for the engine.
- Air-conditioning/ Heating:** Air-conditioning in rear living area but not in driver's cabin. Heating in driver's cabin and gas heater for living area.
- Lighting:** Interior lights operate from the 24 volt domestic battery only.
- Fridge/Freezer:** Operates on 24v battery when driving and switches to 240v mains power when connected at a campground. 85 litres.
- Microwave:** Operates only when the vehicle is connected to mains power (240v).
- Gas Stove:** A 4 burner cooker with griller which is ignited with a match.
- Gas Bottle:** A 9kg bottle is supplied full on vehicle collection (See extra hire items for more details)
- Cooking Utensils:** Vehicles are supplied with all cutlery, crockery and cooking utensils.
- Bathroom Facilities:** Pressurised hot and cold water to shower.
- Toilet:** Located in cubicle with shower. Waste flushed into cassette holding tank that is accessible from exterior compartment. Toilet is provided full of chemicals on pick-up and with a small complementary chemical supply. Cassette waste tank must be empty and rinsed out prior to drop-off.
- Water Heater:** Gas operated water heater. (approx. 15 mins to heat) ignited by a match.
- Fresh Water Tank:** Capacity is 145 litres and filler hose is supplied.
- Grey Water Tank:** Yes - capacity: 75 litres.
- Fly Screens:** Fitted on all opening windows.
- Fire Extinguisher:** Supplied.



Vehicle Specifications

Vehicle Length	6.80 metres
Vehicle Width	2.40 metres
Vehicle External Height	3.40 metres
Vehicle Internal Height	2.10 metres
Engine Specifications	4.6 litre diesel
Fuel Consumption	16 litres per 100km
Fuel Tank Capacity	90 litres
Transmission	6 speed automatic
Audio System	AM/FM radio and cassette
Seatbelts	3 driver's cabin, 4 rear living area
Baby Seats	Fitted with seatbelt only, no anchor points required in NZ.
Booster Seats	Can be fitted
Cigarette Lighter	24 volt
Internal walk-through access	N/A

